



Staying the night in and around
Tropical Islands
Europe's largest tropical holiday world!



... and you feel good.

When Night Falls in the Tropics

Europe's largest tropical holiday world is one of a kind – home to the Tropical Adventure World with the world's biggest indoor rainforest, the enchanting Tropical Village, the mysterious Lagoon and the legendary Tropical Sea with its long sandy beach.

At Tropical Islands you'll also find Europe's biggest Tropical Sauna & Spa complex. The amazing architecture is inspired by models such as the Angkor Wat Temple complex in Cambodia, the Elephanta Temple in Mumbai and other outstanding buildings around the globe.

Tropical Islands is a highlight for tourists not only in the region, but also in all of Germany and across Europe. There's fun, action and relaxation for all the family – in a unique tropical setting.

As darkness falls, why not try out one of the many options at Tropical Islands for staying the night? There are stylish Lodges, tents in the Rainforest Camps, an outdoor campsite, holiday apartments and holiday homes located close to the tropical paradise. In fact, something for everyone!



Spending the Night in a Tent

Ever dreamed of spending the night in a tent on a sandy beach? Fancy adventure and romance all in one? At Tropical Islands, your dream can come true. Stay in a tent in one of our indoor Rainforest Camps. We offer a range of tents in different sizes. And they're quite comfortable too – all tents are equipped with mattresses, sheets, blankets and pillows.

Wake up the next morning on the beach feeling relaxed and refreshed, the sound of the waves in your ears and sand between your toes. An unforgettable experience that makes you hungry for more – our great breakfast buffet, for example.

Overnight stay, without breakfast

Adults and children (age 4 – 14)	€ 24.50
Groups (over 20 adults or children)	€ 22.50
School classes	€ 21.50

Overnight stay, with breakfast

Adults	€ 37.00
Children (age 4 – 14)	€ 33.50
Groups (over 20 adults)	€ 35.00
Groups (over 20 children age 4 – 14)	€ 31.50
School classes	€ 29.50

Tents sleep two to four persons. Prices are per bed, excluding admission to Tropical Islands. No extra overnight charge applies on nights for which accommodation is booked. Multi-bed tents may be shared with people not from your party, i.e. if you book single beds you are not entitled to a whole tent on your own. If you want exclusive use of a whole tent, we will have to charge you the cost of the empty beds. Tents are equipped with mattresses, sheets, blankets and pillows.

Prices and details subject to change without notice.



Staying in an Exclusive Tropical Islands Lodge

A day of pampering and exotic taste sensations can make you pleasantly tired. Time to settle into your dream home! What about a place which has stories to tell as well as all the creature comforts? Discover Tropical Islands Lodges.

There are beach huts lining the shore of the Bali Lagoon and Lodges right at the edge of the rainforest up by the waterfall. All our Lodges offer style and comfort in a unique tropical atmosphere.

As well as normal Lodges in Tropical style, we also offer a number of premium and designer Lodges fully equipped with air conditioning, bathrooms and televisions.

During the day, a Lodge makes the perfect base for your journey of discovery in Tropical Islands. And as night falls and peace descends, the Lodges ensure a night to be remembered!

Adults and children (age 4 and over) from € 49.00
incl. one bottle of table water, one bottle of Big Apple
and one bottle of German sparkling wine

Groups (20+ people age 4 and over) from € 47.00

Breakfast reduced*	Adult	Child
	€ 12,50	€ 9,00

* bookable in advance, per person per day

Depending on availability. Prices are per bed, excluding admission to Tropical Islands. No extra overnight charge applies on nights for which accommodation is booked. If you want exclusive use of a whole two-person lodge, we will have to charge you the price for two people. Please note that some Lodges do not have their own sanitary facilities. Signs indicate where the nearest bathrooms and toilets are located in the Dome.

Prices and details subject to change without notice.





Staying the Night at the Tropical Islands Campsite

Mobile homes and trailer-type caravans

Combine a visit to the beautiful Brandenburg moorland with a holiday in the Tropics! The Tropical Islands Campsite is located nearby the Dome and be reached in just a few minutes using our comfortable shuttle bus.

With its idyllic six-hectare site, the Tropical Islands Campsite offers 91 pitches for mobile homes and trailer-type caravans. Pitches are clearly separated from each other. You can choose between a standard pitch and one of our 20 comfort pitches.

The Tropical Islands Campsite meets all the latest standards. In fact, it's considered a five-star facility! Naturally there are excellent sanitary facilities too, including a wash-house with cooking and washing-up areas, washing machines and dryers. Plus the well-stocked Camp Shop has everything you need for your stay, including a good selection of fresh food and bread hot from the oven.



Staying the Night at the Tropical Islands Campsite

Tepees

With a total area of 5,000 m², the camping area at Tropical Islands has plenty of place for tents. Our 34 tepees made of wood and canvas blend into the Brandenburg moorland perfectly, like a sleepy village nestling close to the gates to the Tropical World.

Wooden tepees can sleep 2 - 4 people and canvas tepees up to 8. All the tepees are equipped with mattresses, sheets, blankets and pillows, ensuring a cosy night with family or friends.

In the evening you can sit by the barbecue, chewing over your day in Europe's largest tropical holiday world. Then off to bed in your cosy tent. It's all possible - at Tropical Islands!

New: rent-a-bike

You can explore lots of exciting places by bike from Tropical Islands, including unique waterways and fascinating historical buildings. High quality bicycles are available for rent from the Tropical Islands Campsite. Get ready for a voyage of discovery!

Admission to Tropical Islands for guests staying at the Campsite

All guests staying at the Tropical Islands Campsite (whether in their own caravan, mobile home, tent, or one of our tepees) only pay one day's admission to Tropical Islands - every day after that is free. So you can come and go from the Tropical Islands Dome as often as you like. This regulation applies to the whole length of stay booked. Free admission is to the Tropical Adventure World only. Admission is guaranteed up to 11 a.m.; after 11 a.m., admission is only possible if there is sufficient space in the Dome. This offer must be booked in advance.



A Home Away from Home

Holiday apartments close by Tropical Islands

Combine your visit to Tropical Islands with a break in the local area. Our holiday apartments are just 15 minutes' drive from Tropical Islands in the heart of the wonderful Brandenburg moorland and the Dahme-Heideseen Nature Reserve. The area offers excellent opportunities for all kinds of water sports, as well as cycling, horse-riding and hiking in the local forests. To top it all, Tropical Islands is right on your doorstep with its fantastic warm water, Tropical Rainforest and white sandy beaches.

Shopping and more

In the vicinity of your apartment you'll find a supermarket, chemist's, post office, doctor's surgery, cash machines and a number of places to eat. A leaflet in the apartment gives all the important local addresses and telephone numbers.



Holiday Apartments

Our modern holiday apartments range in size from 46 to 90 m². All have balconies and can accommodate two to eight people. We also have two maisonettes of 85 and 101 m². You can park your car at the properties, and bicycles are available for rent. Alternatively you can make use of the shuttle service to Tropical Islands.

All apartments are non-smoking.

Holiday apartments in Teupitz – Rates

incl. final cleaning, towels and bed linen,
excl. breakfast and admission to Tropical Islands

TYPE A (Standard/up to 2 persons/per night) from € 90.00

TYPE B (Standard/up to 4 persons/per night) from € 120.00

TYPE C (Standard/up to 6 persons/per night) from € 130.00

TYPE D (Maisonette/up to 6 persons/per night) from € 140.00

High season supplement* from € 10.00
(per apartment and night)

Extra bed/children's cot one-off fee € 10.00

Minimum stay 2 nights

*See seasonal calendar.

Shuttle service to Tropical Islands, return trip

Bookable in advance min. 24 hours € 29.00

Towels

Extra towel packs € 5.00

Prices and details subject to change without notice.



Features and facilities

The holiday apartments have modern furnishings. Bed linen and towels are provided. Windows are fitted with blackout curtains, ensuring a good night's sleep. Most bathrooms have a bathtub with shower attachment and all have a hairdryer. Living rooms feature a dining area, couch and cable TV.

All holiday apartments have fully-equipped separate kitchens (open kitchen in maisonettes) with a coffee machine, kettle, toaster, hob and oven. Most apartments also have a microwave. In addition, all apartments have a clothes horse, ironing board and iron. Some apartments also have a washing machine.

Admission to Tropical Islands for guests staying in holiday apartments

All guests staying in Tropical Islands holiday apartments only pay one day's admission to Tropical Islands – every day after that is free. So you can come and go from the Tropical Islands Dome as often as you like. This regulation applies to the whole length of stay booked. Free admission is to the Tropical Adventure World only. Admission is guaranteed up to 11 a.m.; after 11 a.m., admission is only possible if there is sufficient space in the Dome.

Low/high season

	MO	TU	WE	TH	FR	SA	SU		MO	TU	WE	TH	FR	SA	SU
					1	2	3	4						1	2
Jul. 2010	5	6	7	8	9	10	11		3	4	5	6	7	8	9
	12	13	14	15	16	17	18		10	11	12	13	14	15	16
	19	20	21	22	23	24	25		17	18	19	20	21	22	23
	26	27	28	29	30	31	1		24	25	26	27	28	29	30
Aug. 2010	2	3	4	5	6	7	8		31	1	2	3	4	5	6
	9	10	11	12	13	14	15		7	8	9	10	11	12	13
	16	17	18	19	20	21	22		14	15	16	17	18	19	20
	23	24	25	26	27	28	29		21	22	23	24	25	26	27
	30	31	1	2	3	4	5		28	1	2	3	4	5	6
Sep. 2010	6	7	8	9	10	11	12		7	8	9	10	11	12	13
	13	14	15	16	17	18	19		14	15	16	17	18	19	20
	20	21	22	23	24	25	26		21	22	23	24	25	26	27
	27	28	29	30	1	2	3		28	29	30	31	1	2	3
Oct. 2010	4	5	6	7	8	9	10		4	5	6	7	8	9	10
	11	12	13	14	15	16	17		11	12	13	14	15	16	17
	18	19	20	21	22	23	24		18	19	20	21	22	23	24
	25	26	27	28	29	30	31		25	26	27	28	29	30	1
Nov. 2010	1	2	3	4	5	6	7		2	3	4	5	6	7	8
	8	9	10	11	12	13	14		9	10	11	12	13	14	15
	15	16	17	18	19	20	21		16	17	18	19	20	21	22
	22	23	24	25	26	27	28		23	24	25	26	27	28	29
	29	30	1	2	3	4	6		30	31	1	2	3	4	5
Dec. 2010	6	7	8	9	10	11	12		6	7	8	9	10	11	12
	13	14	15	16	17	18	19		13	14	15	16	17	18	19
	20	21	22	23	24	25	26		20	21	22	23	24	25	26
	27	28	29	30	31				27	28	29	30			

High season Low season

NEW Holiday Homes at Tropical Islands

Staying the Night in a Novasol Holiday Home

From summer 2010 you'll be able to stay in your own holiday home within walking distance of the Tropics. The new holiday homes are right next to Tropical Islands, in the middle of Brandenburg's beautiful natural landscape.

Facilities

All holiday homes feature a television, DVD player, stereo system, jacuzzi, sauna, washing machine, dryer and air conditioning, as well as a fully fitted kitchen. They each have two parking places, garden furniture and even a barbecue for those glorious summer evenings!

In the region

Right next to Tropical Islands, holidaymakers can enjoy the privacy of a home away from home, spending action-packed days in Tropical Islands and discovering the extensive range of sport and leisure options in the region. Why not explore the unique Spreewald, try go-karting at the Kart Center Spreewaldring or visit the Dahme-Heideseen nature reserve? And there's always Berlin and Dresden, both within easy reach by car.

And best of all: for every day you book accommodation, admission to the Tropical World at Tropical Islands is included in the price!

For further details, see www.tropical-islands.de/en



Staying in Holiday Homes from NOVASOL

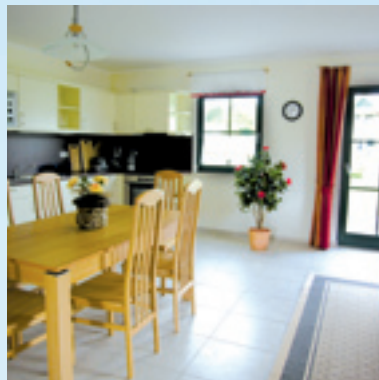
More apartments and houses close to Tropical Islands

NOVASOL offers attractive holiday homes, including apartments or whole houses, within 1.5 hours' drive of Tropical Islands.

Visitors booking a holiday home from the current NOVASOL Germany catalogue also enjoy discount ticket prices at Tropical Islands, with savings of up to € 7.50 per person on admission. Adults pay just € 17.50 admission instead of up to € 25.00, and children € 14.50 instead of up to € 19.50.

Subject to change without notice.

For further details, see www.tropical-islands.de/en



Hotel Accommodation

There are hotels in all categories and for all tastes in the vicinity of Tropical Islands. Partner hotels are located at varying distances from Tropical Islands, from 8 to 70 km, including hotels in Berlin and Cottbus. We've arranged special deals with our partner hotels to ensure your stay is both comfortable and great value. All hotel packages include one overnight stay, breakfast, and admission to Tropical Islands for one person.

Hotel categories

Best quality	🌴🌴🌴
High quality	🌴🌴
Medium quality	🌴

Package price per person

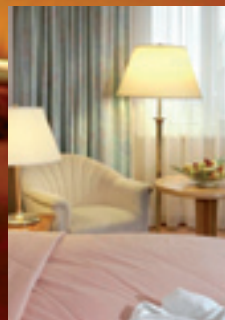
	per person
🌴🌴🌴	from € 70.00
🌴🌴	from € 65.00
🌴	from € 60.00

Children 4 - 14 years

	per person
🌴🌴🌴	from € 42.00
🌴🌴	from € 37.00
🌴	from € 34.50

Children under 3 stay free. Children's cots available on request.

Prices and details subject to change without notice.





By train: Direct trains from Berlin, Senftenberg and Cottbus: regional trains RE 2 or RB 14 to Brand (Niederlausitz), free shuttle bus between railway station and Tropical Islands

Tropical Islands

Phone.: +49 (0) 354 77/60 50 50

Fax: +49 (0) 354 77/60 60 60

welcome@tropical-islands.de

www.tropical-islands.de/en

Tropical-Islands-Allee 1

D-15910 Krausnick



... and you feel good.

Presented by: